

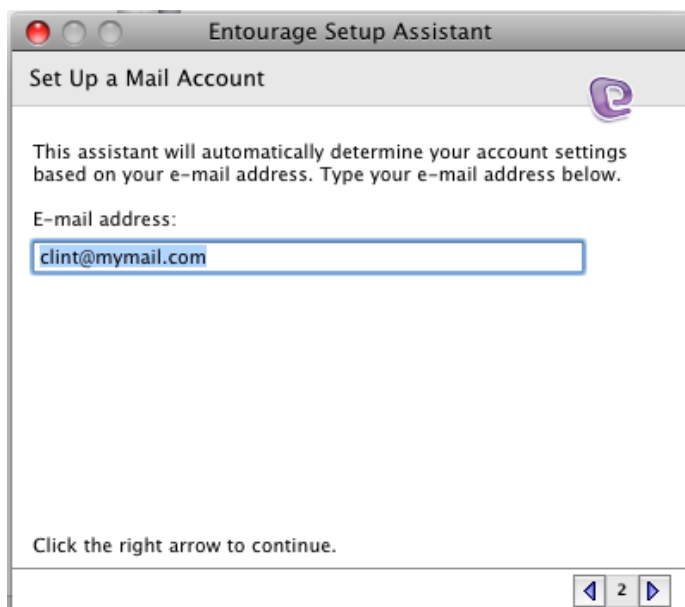


MyMail'sSM Instructions for Entourage Setup

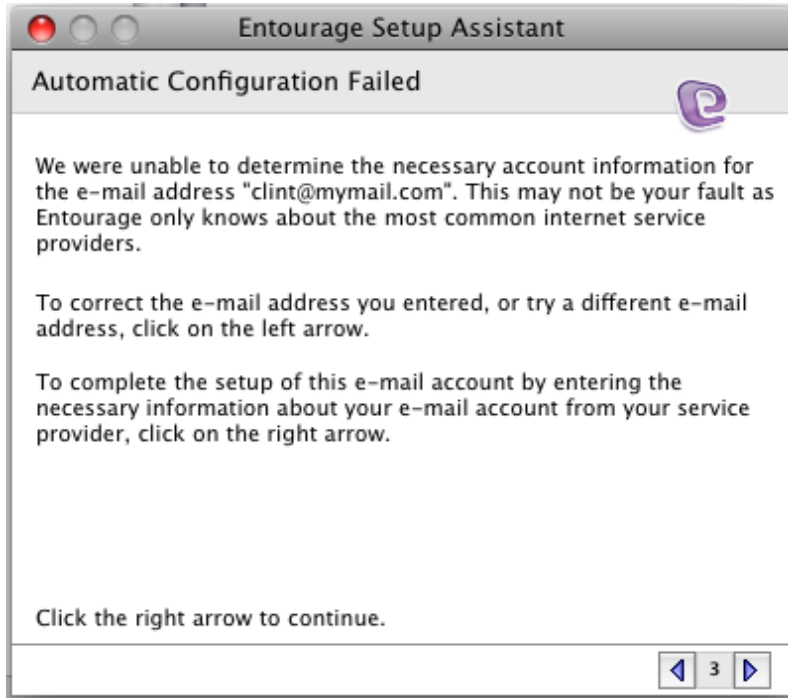
1. When you first initialize Entourage the Entourage setup assistant will begin.
2. It will ask what you want to do. Select the "Start using Entourage without importing anything" choice and click the right arrow in the bottom right corner



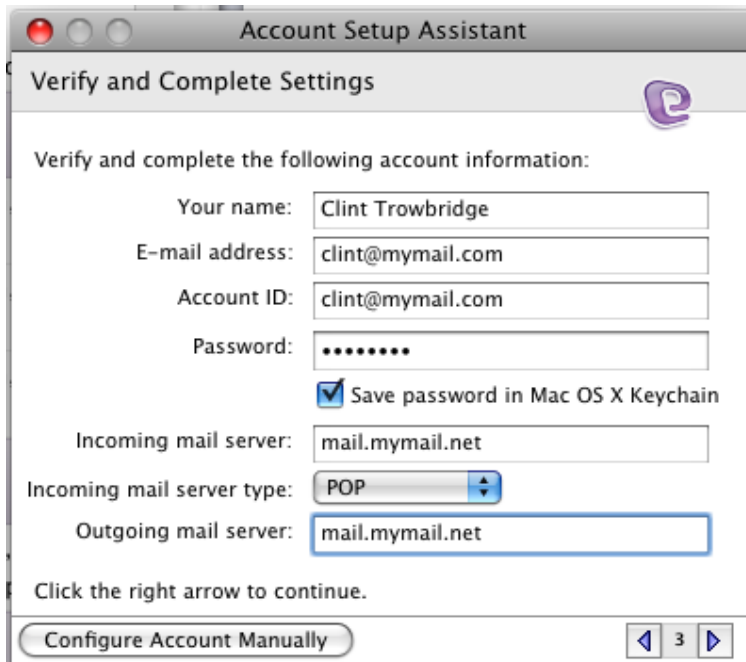
3. Enter in your full MyMail address and click the right arrow again



4. Entourage will try to automatically configure the system and will fail. This is OK and part of the procedure. Click the right arrow to proceed.



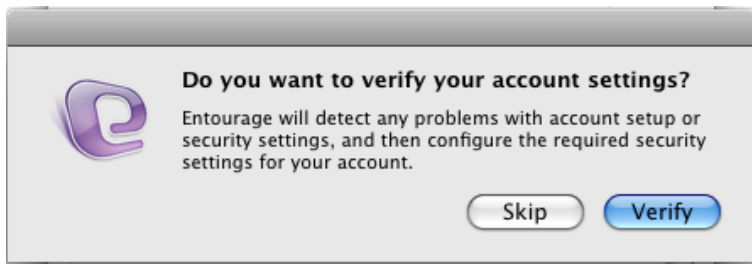
5. Fill in your name, full email address, the account ID requires your full email address also.
6. The servers are both mail.mymail.net. Click the right arrow to continue.



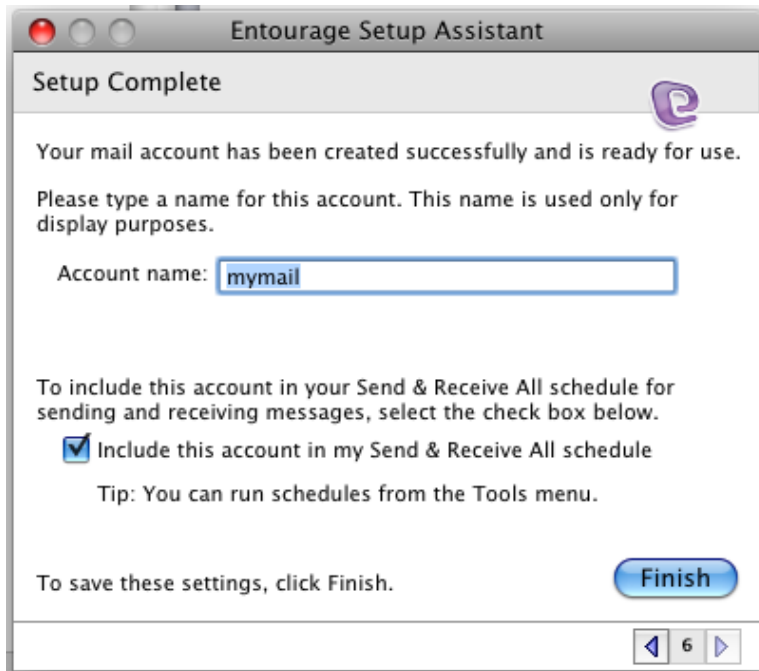
7. Skip verifying the settings and click the right arrow again.



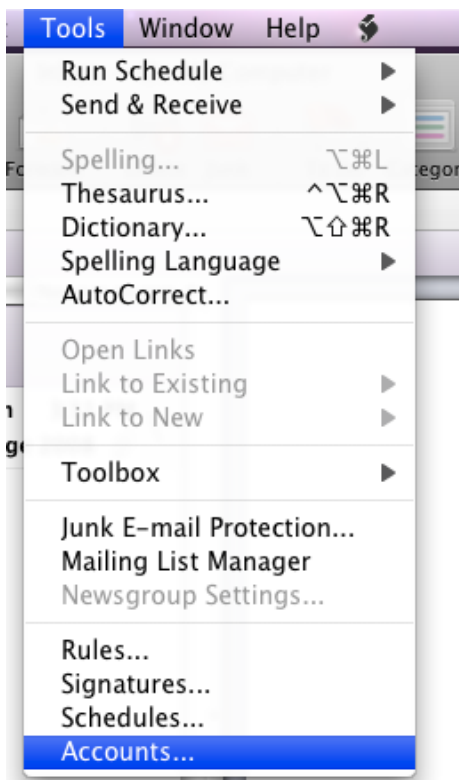
8. You will be asked if you are sure. Click skip on the pop up box



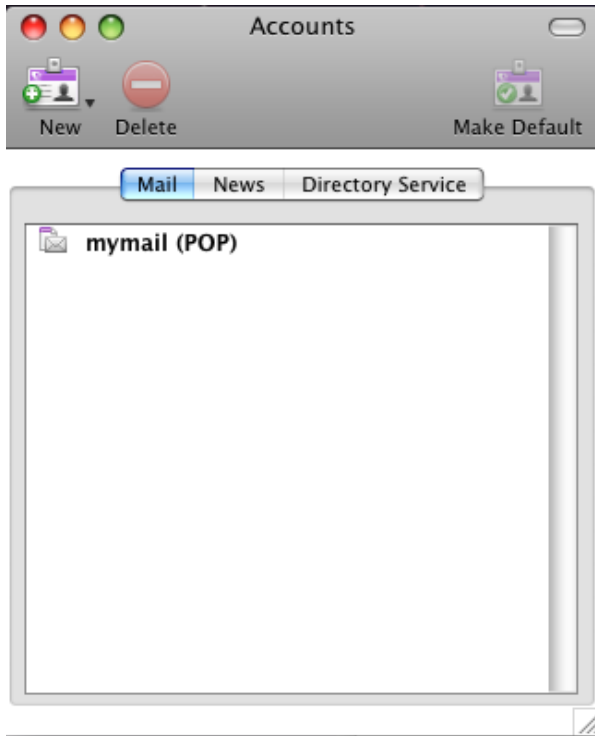
9. Name your account. And click finish.



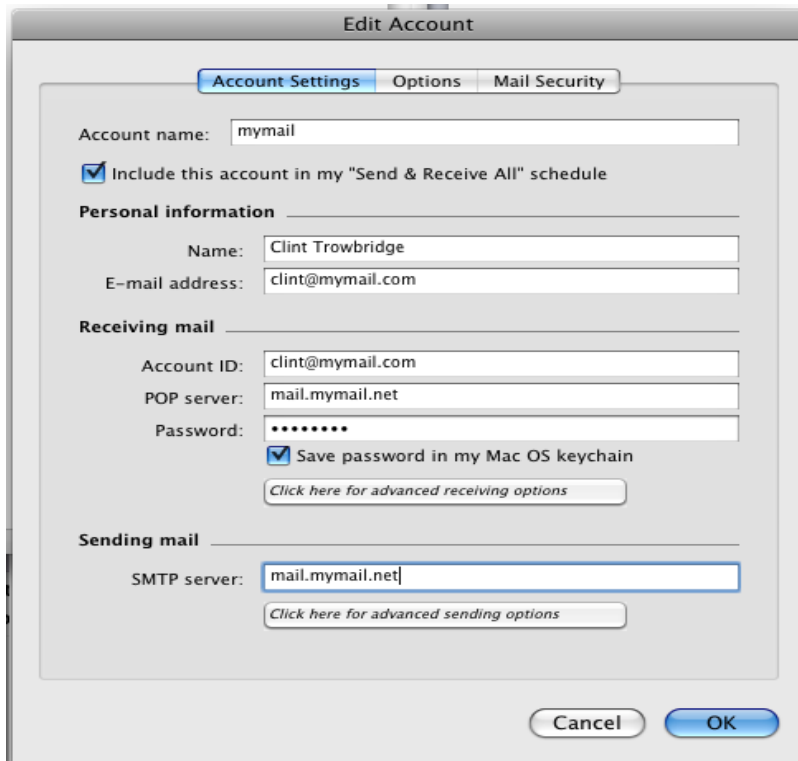
10. When the Entourage setup assistant closes click Tools in the Apple Bar and select Accounts... from the menu.



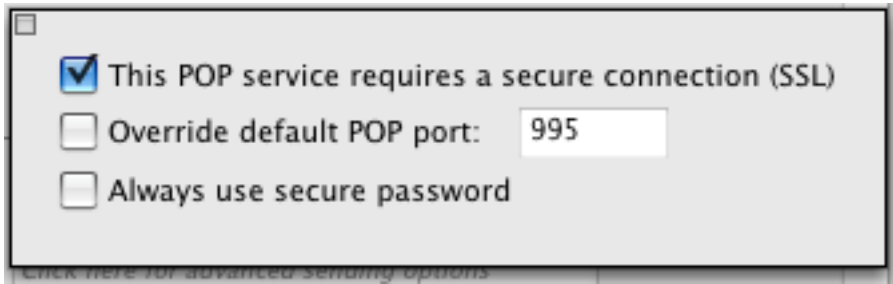
11. The Accounts box opens. Double click on the MyMail account.



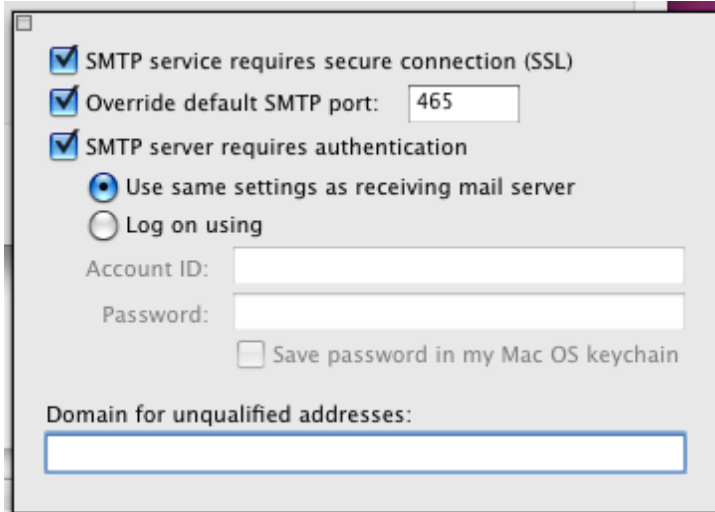
12. When the Edit Account box opens click the “Click here for advanced receiving options”



13. Check the box that This POP service requires a secure connection (SSL). The port will automatically change to 995. Click the box in the top left to close this.



14. Clicking the Click here for advanced sending options buttons.
15. Check all three check boxes and change the SMTP port from 25 to 465. Also select to use the same settings as receiving mail server. Click the box in the top left corner to close.



16. Click OK. Your email account is set up.

