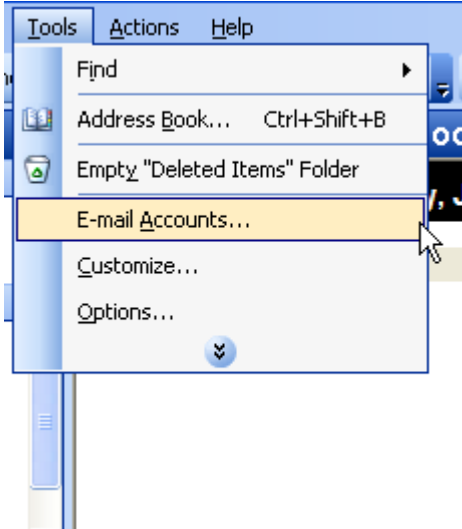
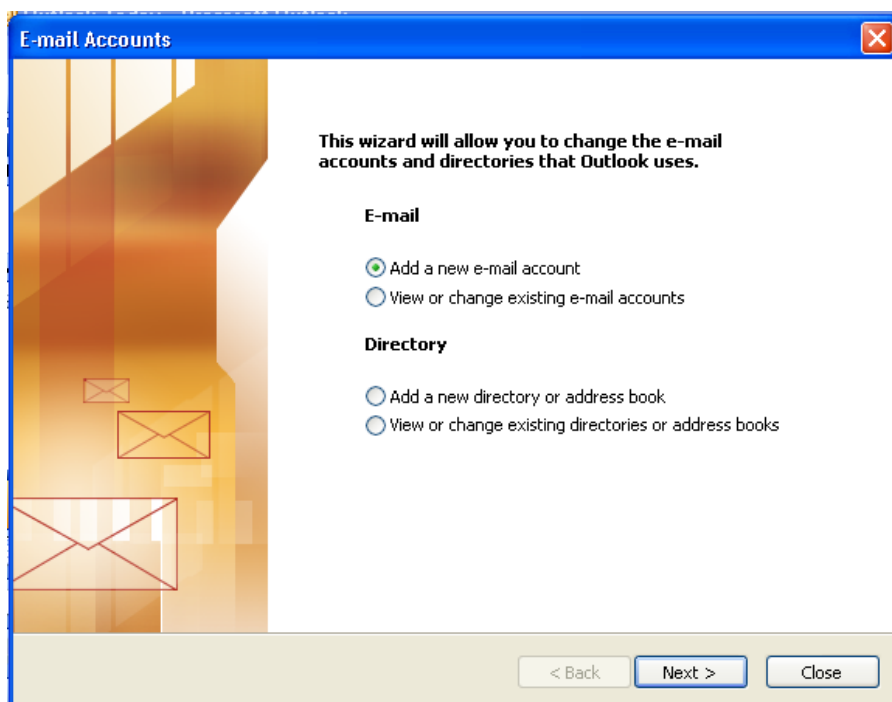


MyMailSM Setup Instructions for Outlook 2003

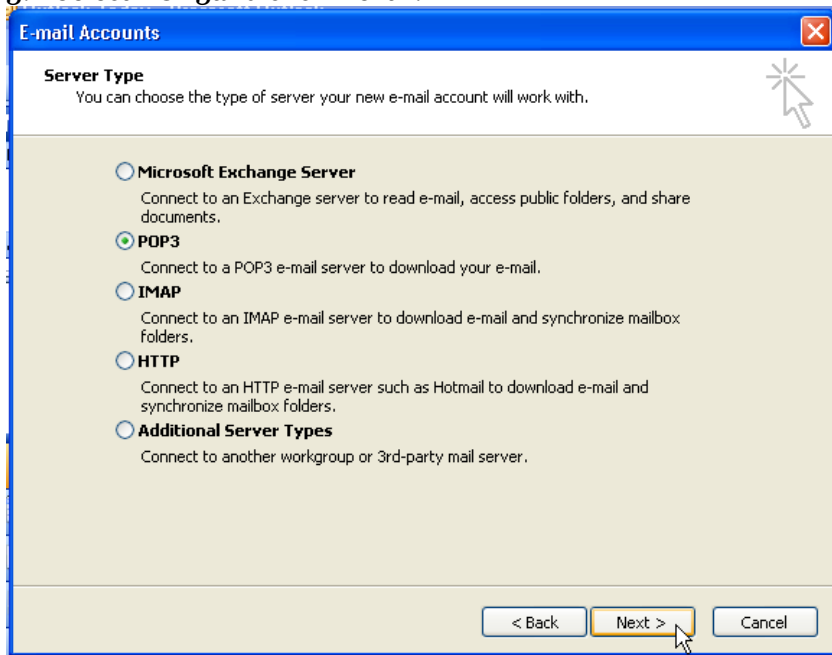
1. Click Tools and E-mail Accounts...



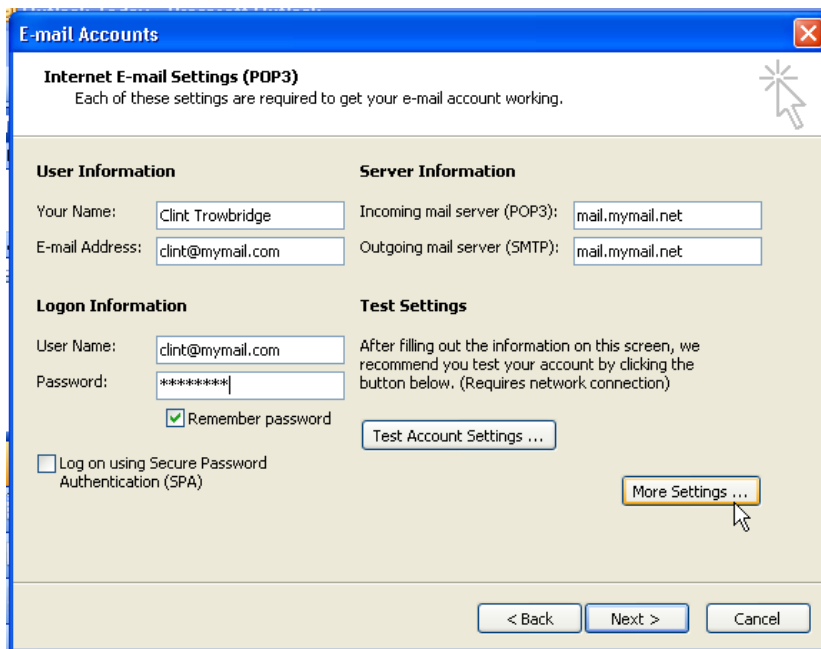
2. Add a new e-mail account by clicking next >.



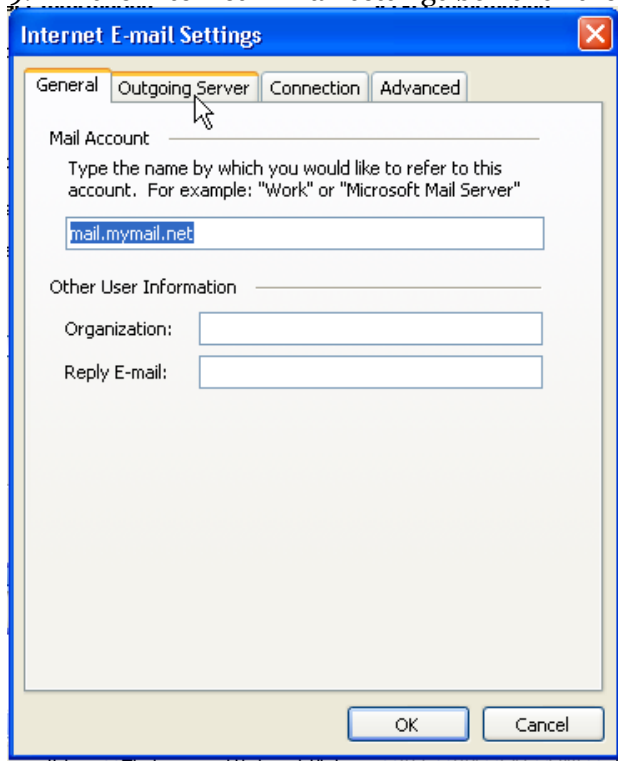
3. Select POP3 and click Next>.



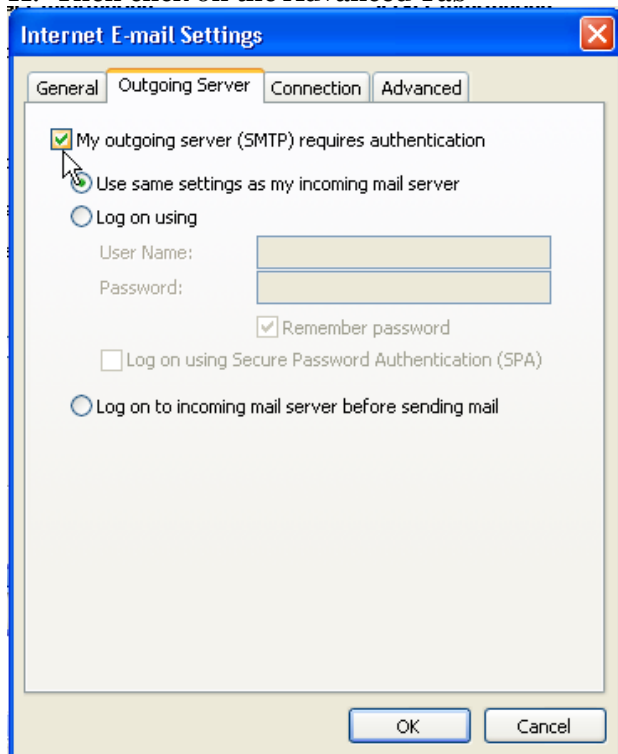
4. Enter Your name and your Full E-mail address
5. Enter mail.mymail.net for the Incoming and Outgoing servers
6. Your Username is your complete email address.
7. Enter your password in the password field
8. Click More Settings...



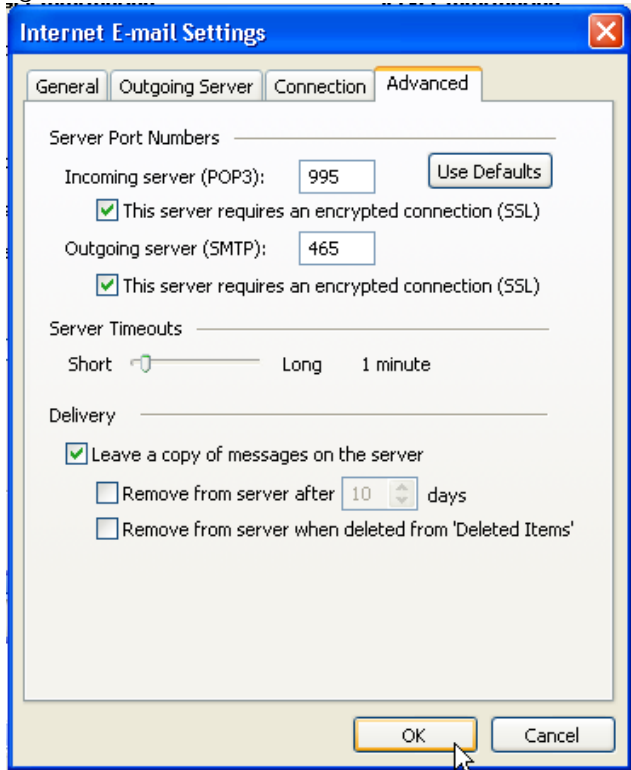
9. In the Internet E-mail settings box click the Outgoing Server Tab.



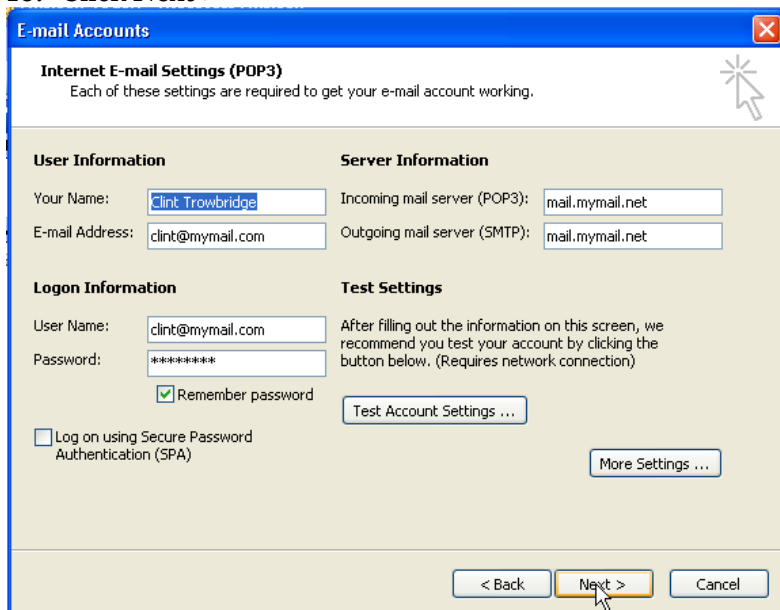
10. Check the "My outgoing server (SMTP) requires authentication" box
11. Then click on the Advanced Tab



12. On the Advanced tab Check both “This server requires an encrypted connection (SSL)” boxes
13. The Incoming server (POP3) changes to 995
14. The Outgoing server (SMTP) needs to be changed to 465
15. Click OK

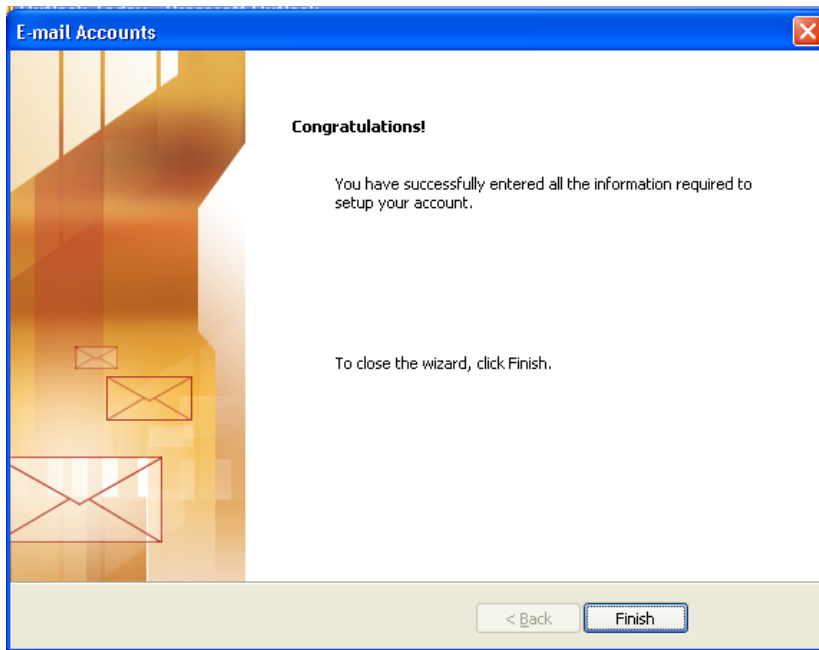


16. Click Next >



17. Click Finish





18. Your mail is ready to view.

