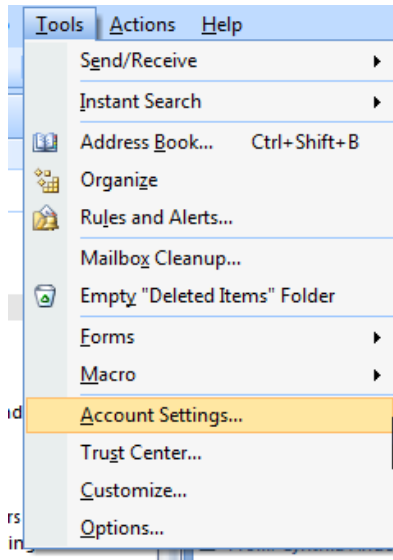


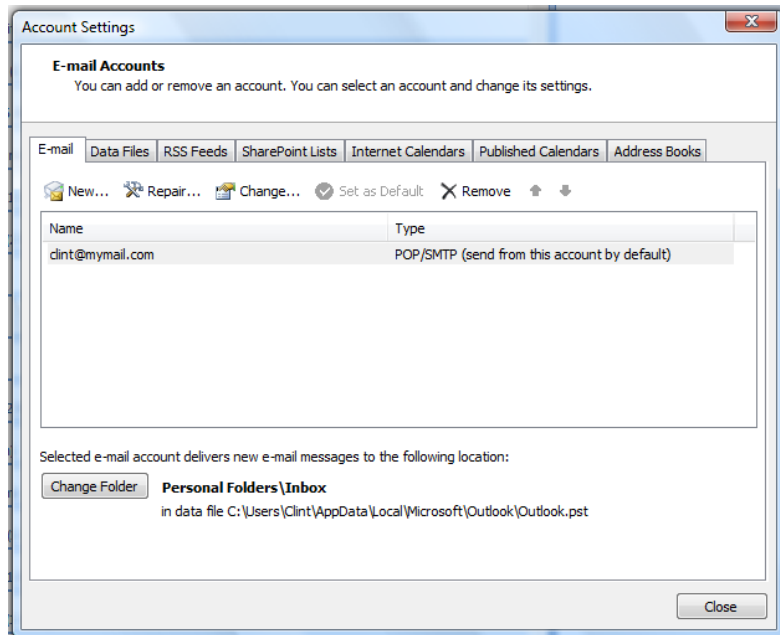
## Outlook 2007 MyMail Setup

---

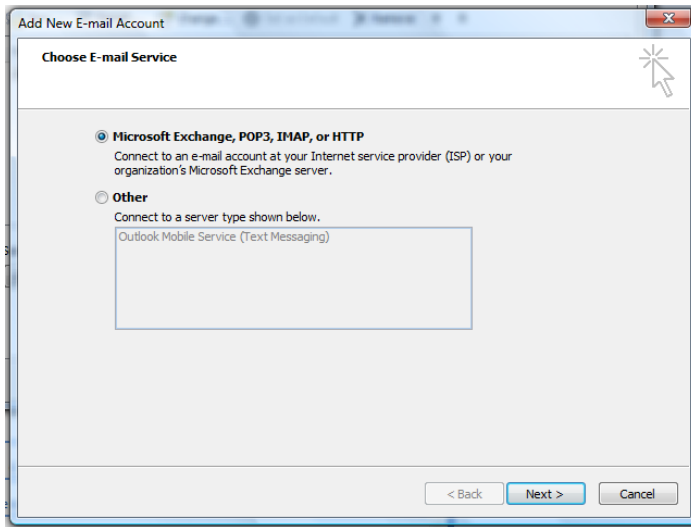
1. Click **T**ools
2. Click **A**ccount Settings...



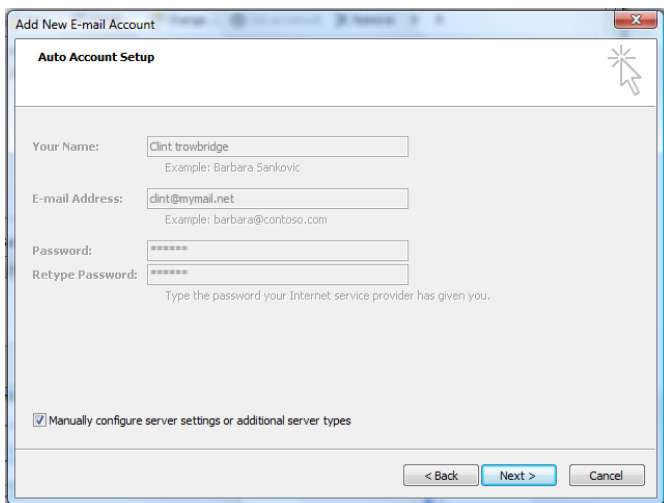
3. On the Account Settings screen click **N**ew...



4. In the Add new E-mail Account click **N**ext >

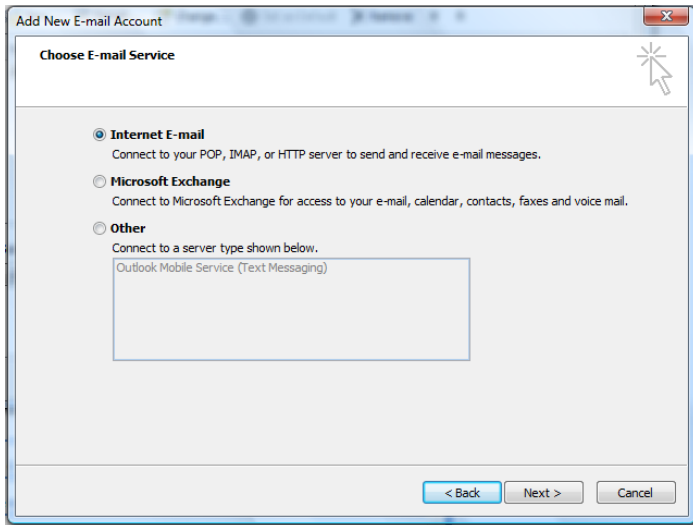


5. After inputting your name, email address and password then check the Manually configure server settings or additional server types then click next.

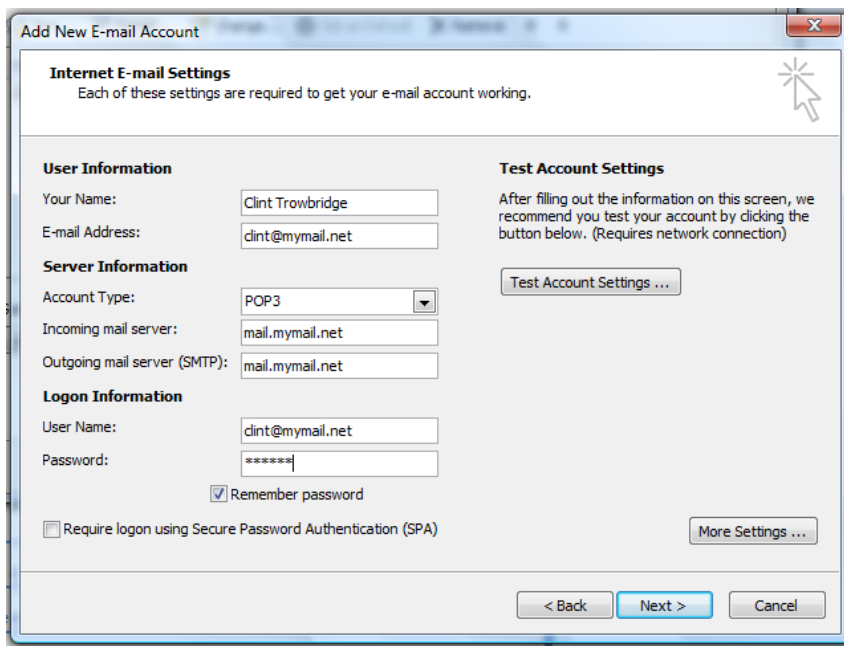


6. On the Choose E-mail Service screen choose Internet email and then click next



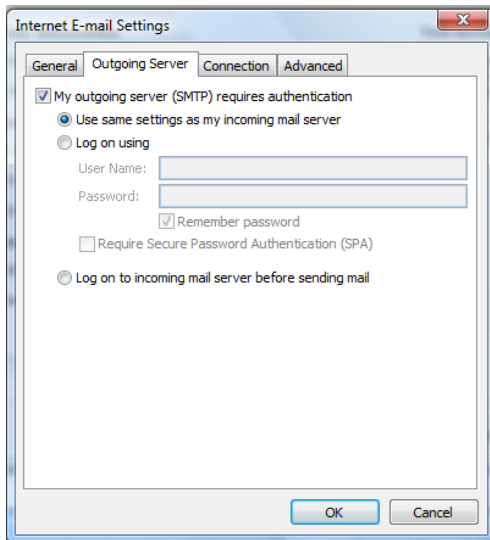


7. Enter in the account type as POP3
8. The incoming and outgoing mail servers are both mail.mymail.net
9. Your username is your entire email address
10. Then enter your password.
11. Click More Settings

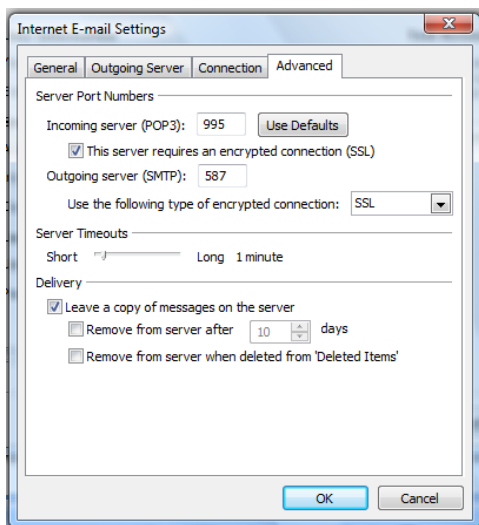


12. On the Outgoing Server tab of the Internet E-mail Settings box check the My outgoing server (smtp) requires authentication and the use same settings as my incoming server





13. On the Advanced tab of the Internet E-mail settings box Both servers require SSL connections.
14. The incoming server uses the port number 995
15. The outgoing server uses the port number 587
16. Click OK



17. Click Finish on the end account and your account is completely setup.
18. Test your account settings by sending an email and asking someone else to send one to you

